

Anthology Poetry Unit 2

Lesson 3

Excerpt from 'The Prelude' - Wordsworth

Learning Outcomes

1. You will be able to explain what the poem is about
2. You will be able to comment on the themes and ideas in the poem
3. You will show your understanding of the context of the poem.
4. You will analyse the language and structure of the poem
5. You will discuss your personal response to the poem.



Is this the same or different to
Wordsworth's ice-skating episode?

<https://www.youtube.com/watch?v=jhnVWWzgNwg>

We'll come back to this question at the end of
the lesson.

Context

Summarise this information in notes in your books

- In his epic poem THE PRELUDE, William Wordsworth – who is regarded as the quintessential Romantic poet of nature – tells the story of his life, pausing, sometimes, to reflect on significant moments.
- In addition to believing that the natural world should be the most important source of inspiration for poetry, Wordsworth felt that there can be certain moments in our lives in which we go beyond, or transcend, everyday "reality" and experience ourselves and the world around us more vividly or in a different way. These "spots of time", as he calls them, stand out in our memories and have the power to strengthen us in difficult times.
- For him, his childhood in the English Lake District was particularly rich in these moments, many of which are recorded in the first books of THE PRELUDE. Here he describes the experience of skating on a frozen lake at nightfall.

What is this about? Interesting use of language?

And in the frosty season, when the sun
was set, and visible for many a mile the cottage
windows through the twilight blaz'd, I heeded
not the summons:

What is this about? Interesting use of language?

- happy time it was, indeed, for all of us; to me it was a time of rapture: clear and loud the village clock toll'd six; I wheeled about proud and exulting, like an untir'd horse, that cares not for his home.

What is this about? Interesting use of language?

- All shod with steel we hiss'd along the polish'd ice, in games confederate, imitative of the chace and woodland pleasures, the resounding horn, The Pack bellowing, and the hunted hare.

***Sibilance** is used as a stylistic device in **poetry** in which an "s" sound is repeated more than twice in quick succession.*

What is this about? Interesting use of language?

So through the darkness and the cold we flew,
and not a voice was idle; with the din,
meanwhile, the precipices rang aloud, the
leafless trees and every icy crag tinkled like iron,

What is this about? Interesting use of language?

While the distant hills into the tumult sent an alien sound of melancholy, not unnoticed, while the stars, eastward, were sparkling clear, and in the west the orange sky of evening died away.

Language

Which of these devices does Wordsworth use in his poem?

Row 2 - Write an example of the ones you can find

Row 3 – comment on the effect achieved

simile	sibilance	Vivid description	personification	Positive language

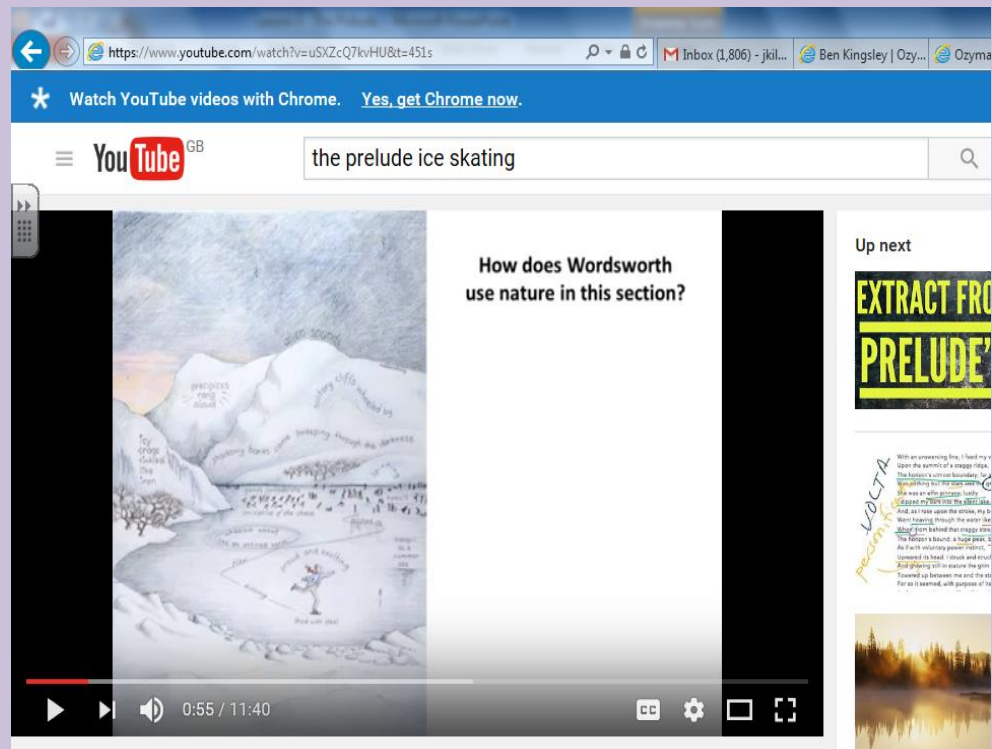
What does Wordsworth want you to think about in this poem?

<https://www.youtube.com/watch?v=jhnVWWzgNwg>

Is this the same or different to Wordsworth's ice-skating episode?

Extending learning

- <https://www.youtube.com/watch?v=uSXZcQ7kvHU&t=451s>



Which poems could you choose to compare to 'The Prelude' and why?